

Joggle Cases

Product Description

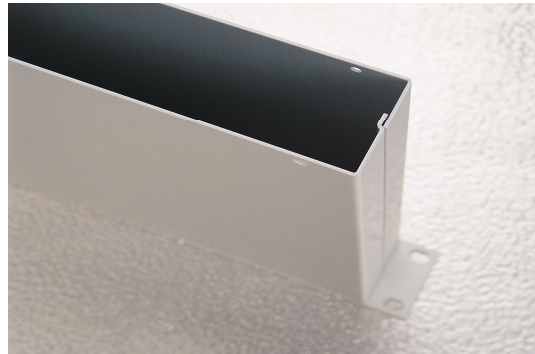
The joggle case provides a robust and sturdy case. This case is built with an extended bottom cover that incorporates a joggle, so that the two halves overlap to form a more rigid case when needed. We are happy to quote to vary the size, finish or construction of any unit.

Note:

For those customers who previously ordered the Shell case, which is constructed without the joggle, this is still available on request.

Product Features

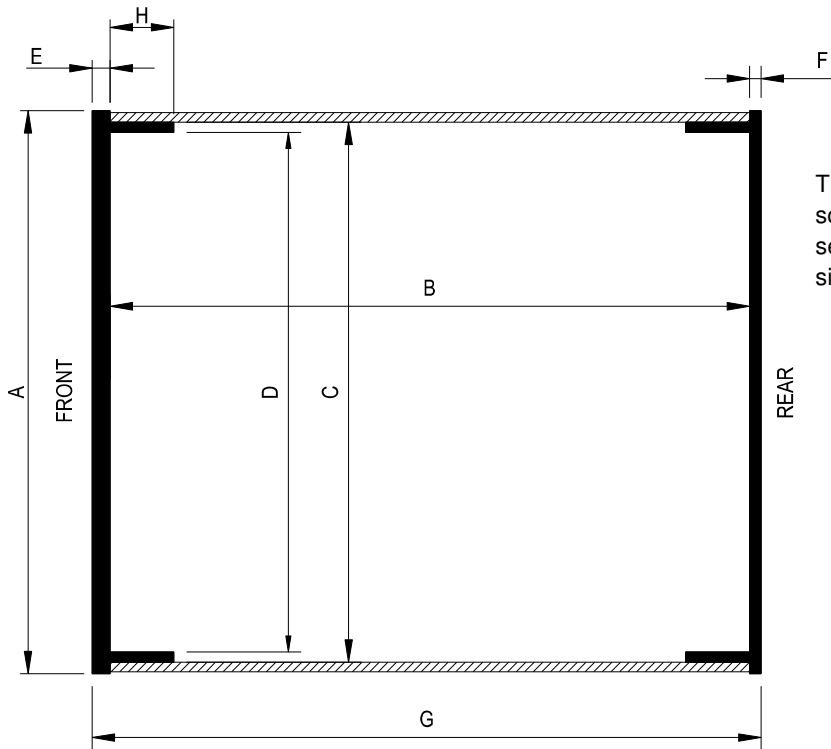
- A four part construction, the front and rear are made from extrusion (2.8mm and 1.8mm thick respectively), the bottom cover is extended and incorporates a joggle so that the two halves overlap to provide extra rigidity.
- Improved EMC performance due to the type of construction
- Fixings in the side can be provided as an option
- The front panel is finished in dawn grey and the rest of the case is clear anodised



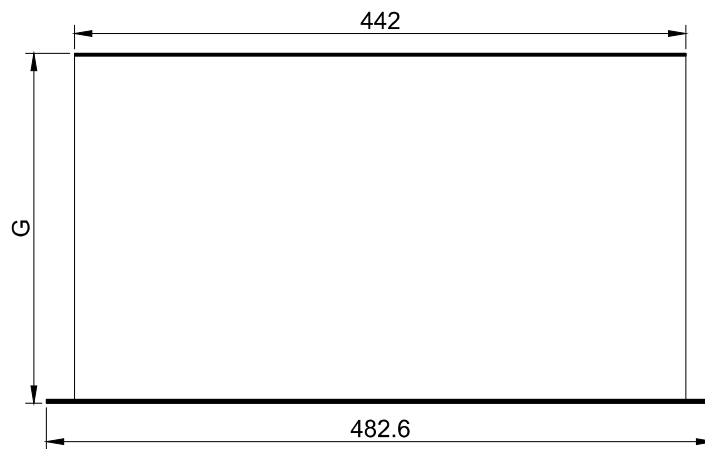
Part no.	Description	Weight
028100	1RUx100mm	0.70kg
028200	1RUx150mm	0.90kg
028300	1RUx250mm	1.20kg
028400	1RUx300mm	1.50kg
028500	2RUx100mm	1.00kg
028600	2RUx150mm	1.20kg
028700	2RUx250mm	1.60kg
027800	2RUx300mm	1.70kg
048700	3RUx100mm	1.40kg
050200	3RUx150mm	1.60kg

Case sizes

The following information applies to the Joggle, Alex and EMC ranges of cases.



The diagram to the left (not to scale) shows a general cross section with nominal dimensions.



The diagram to the right (not to scale) shows a general plan with nominal dimensions.

Case Size	A	B	C	D	E	F	G	H
1RUx100mm	43.7	100.0	40.3	37.1	2.8	1.8	104.6	10.00
1RUx150mm	43.7	150.0	40.3	37.1	2.8	1.8	154.6	10.00
1RUx250mm	43.7	250.0	40.3	37.1	2.8	1.8	254.6	10.00
1RUx300mm	43.7	300.0	40.3	37.1	2.8	1.8	304.6	10.00
2RUx100mm	88.0	100.0	84.4	81.2	2.8	1.8	104.6	10.00
2RUx150mm	88.0	150.0	84.4	81.2	2.8	1.8	154.6	10.00
2RUx250mm	88.0	250.0	84.4	81.2	2.8	1.8	254.6	10.00
2RUx300mm	132.6	300.0	84.4	81.2	2.8	1.8	304.6	10.00
3RUx100mm	132.6	100.0	129.4	126.2	2.8	2.8	105.6	10.00
3RUx150mm	132.6	150.0	129.4	126.2	2.8	2.8	155.6	10.00
3RUx250mm	132.6	250.0	129.4	126.2	2.8	2.8	255.6	10.00
3RUx300mm	132.6	300.0	129.4	126.2	2.8	2.8	305.6	10.00